

Saint-Saens — Carnival of the Animals

2

CONTREBASSE

N° 2

Poules et Coqs

Allegro moderato

34



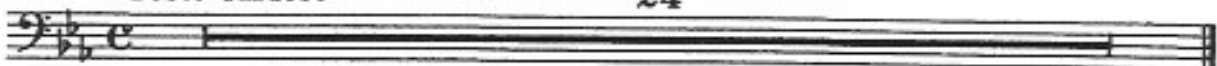
N° 3

Hémiones

(Animaux véloces)

Presto furioso

24



N° 4

Tortues

Andante maestoso

1<sup>er</sup> Piano

C. BASSE

pp

pp



N° 5

L'Éléphant

Allegretto pomposo

2<sup>d</sup> Piano

C. BASSE SOLI



Saint-Saens — Carnival of the Animals

CONTREBASSE

3

Musical score for Contrabass, measures 1-5. The score is in bass clef with a key signature of two flats (B-flat and E-flat). Measure 1 starts with a mezzo-forte (*mf*) dynamic. Measure 2 contains a first ending bracket labeled '2'. Measure 3 contains a second ending bracket labeled '3'. Measure 4 contains a third ending bracket labeled '4' and a fortissimo (*ff*) dynamic. Measure 5 ends with a fermata.

N° 6

Kangourous.

Musical score for Kangourous, measures 1-5. The score is in bass clef with a key signature of two flats. The tempo is marked 'Moderato'. The score consists of five measures, each containing a triplet of notes. Measure 1 has a '3' above the notes. Measure 2 has a first ending bracket labeled '1' above the notes. Measure 3 has a '3' above the notes. Measure 4 has a second ending bracket labeled '2' above the notes. Measure 5 has a '3' above the notes and a fermata.

N° 7

Aquarium

Musical score for Aquarium, measures 1-39. The score is in bass clef with a key signature of two flats. The tempo is marked 'Andantino'. The score consists of a single long line representing 39 measures, ending with a fermata.

N° 8

Personnages à longues oreilles

Musical score for Personnages à longues oreilles, measures 1-24. The score is in bass clef with a key signature of two flats. The tempo is marked 'Tempo ad lib'. The score consists of a single long line representing 24 measures, ending with a fermata.

N° 9

Le Coucou au fond des bois

Musical score for Le Coucou au fond des bois, measures 1-42. The score is in bass clef with a key signature of three sharps (F#, C#, G#). The tempo is marked 'Andante'. The score consists of a single long line representing 42 measures, ending with a fermata.